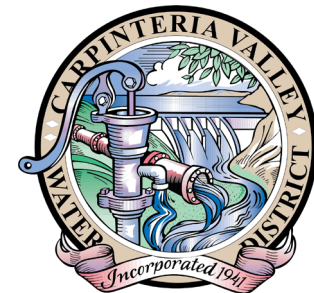


Carpinteria Advanced Purification Project

Open House / Scoping Meeting

PRESENTED BY

Rosalyn Prickett | Woodard & Curran

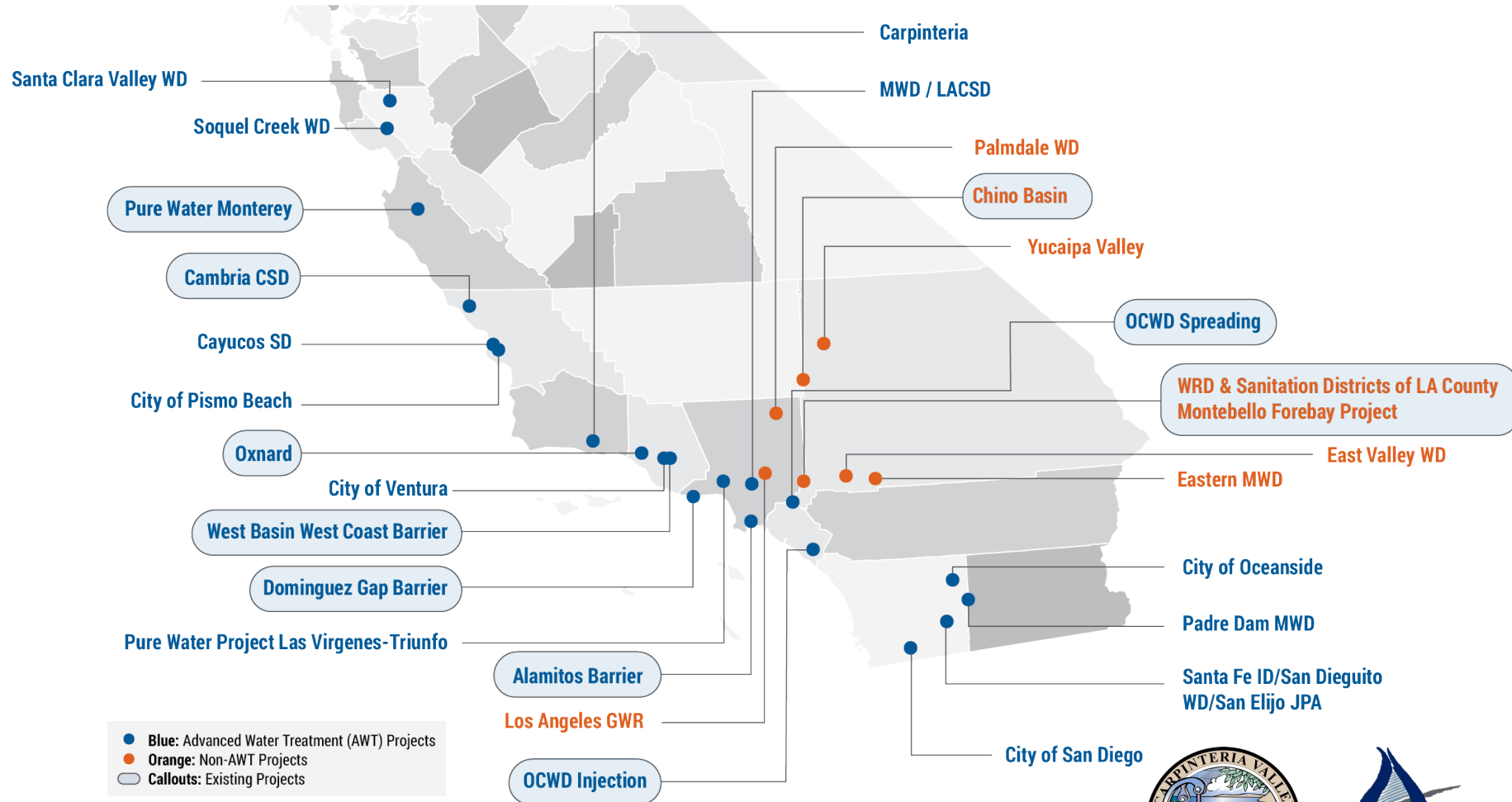


Project Goals

- Develop local supply
- Develop drought resistant supply
- Offset losses / reduced reliability of State Water Project and Cachuma supplies
- Improve groundwater management
- Improve groundwater quality
- Minimize ratepayer impact

Groundwater Replenishment & Reuse Projects

- Concept proposed for Carpinteria in 2015
- Proven technology, currently in use at 10 sites in Southern California



Project Components

- Advanced Water Purification Facility (AWPF)
- Purified Water Pump Station
- Ocean Outfall Modifications
- Conveyance Pipelines
- Injection Wells
- Monitoring Wells

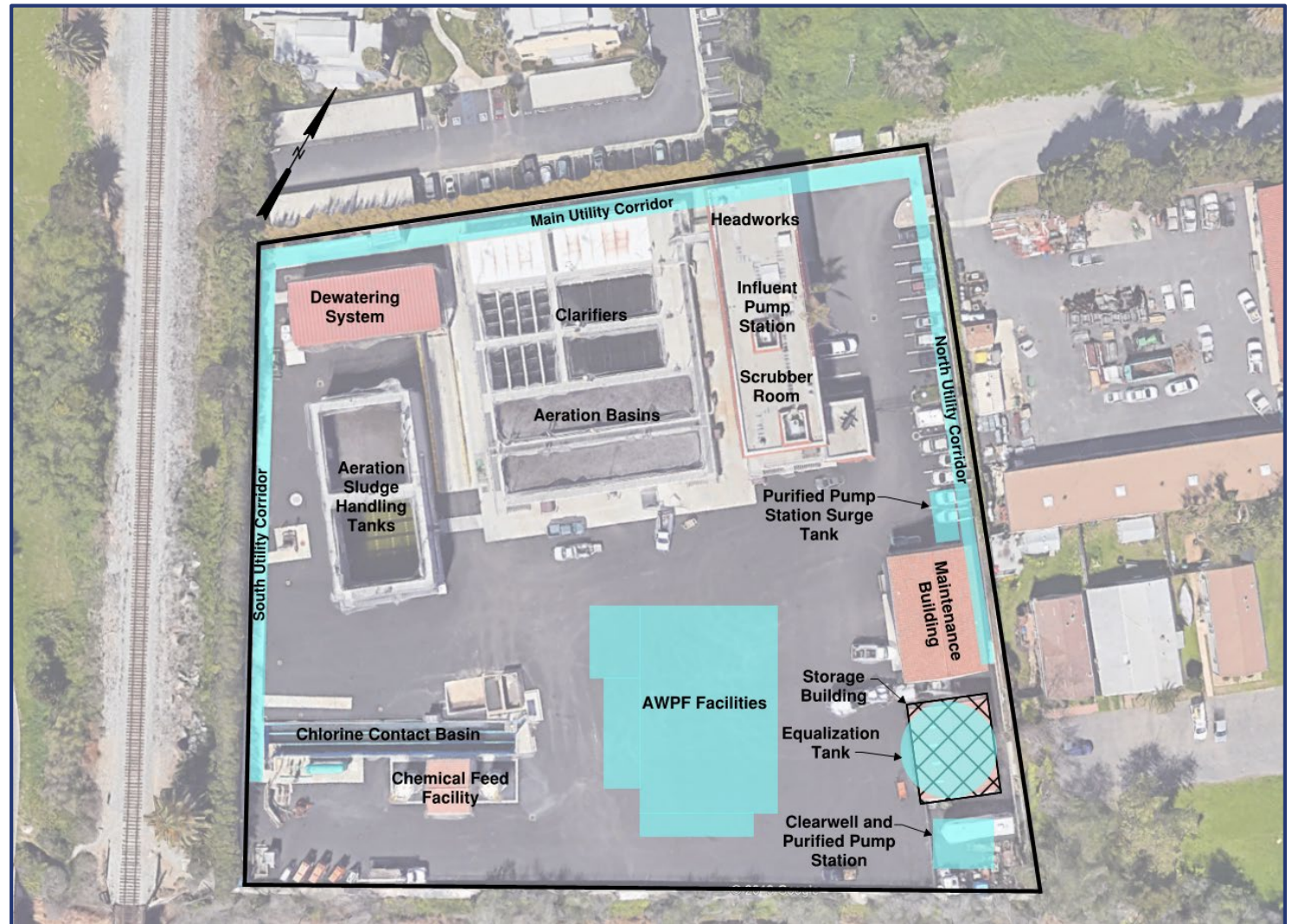


Replenishing Our Groundwater for the Future

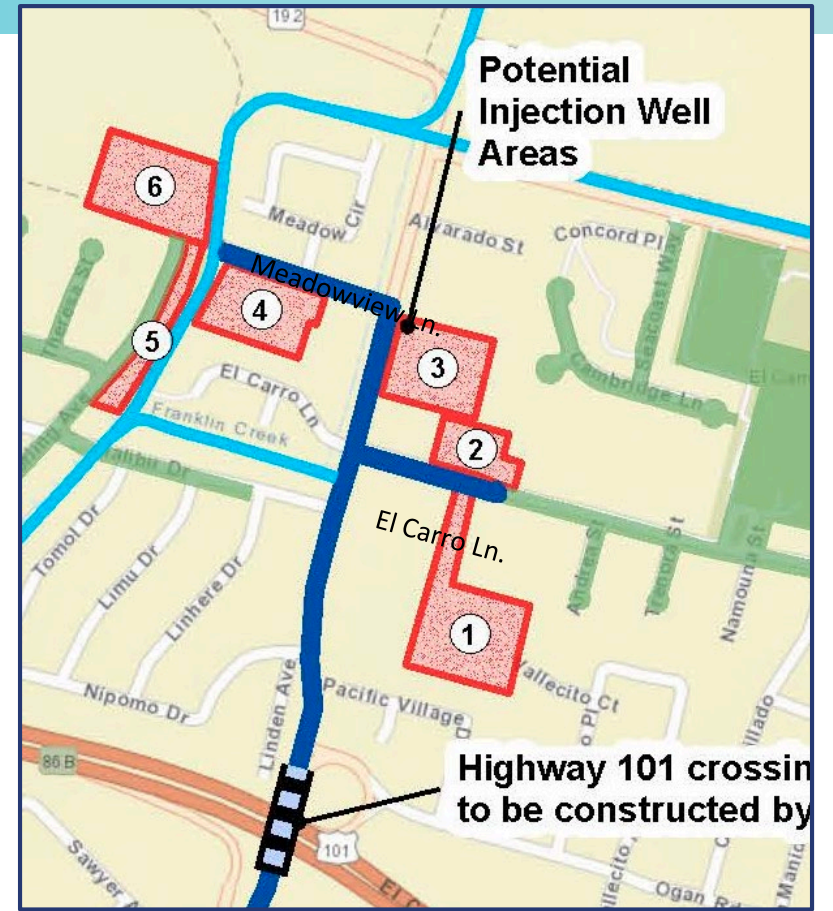


Advanced Water Purification Facility

- Located within existing Wastewater Treatment Plant



Alignments & Well Sites



1. Canalino Elementary School (field)
2. St Josephs Catholic Church (parking)
3. St Josephs Catholic Church (field)
4. Church of LDS (parking)
5. Franklin Park
6. Private ag parcel



Injection Wells



Injection well footprint: 60 ft x 100 ft
Monitoring well footprint: < 3ft diameter



Monitoring Wells



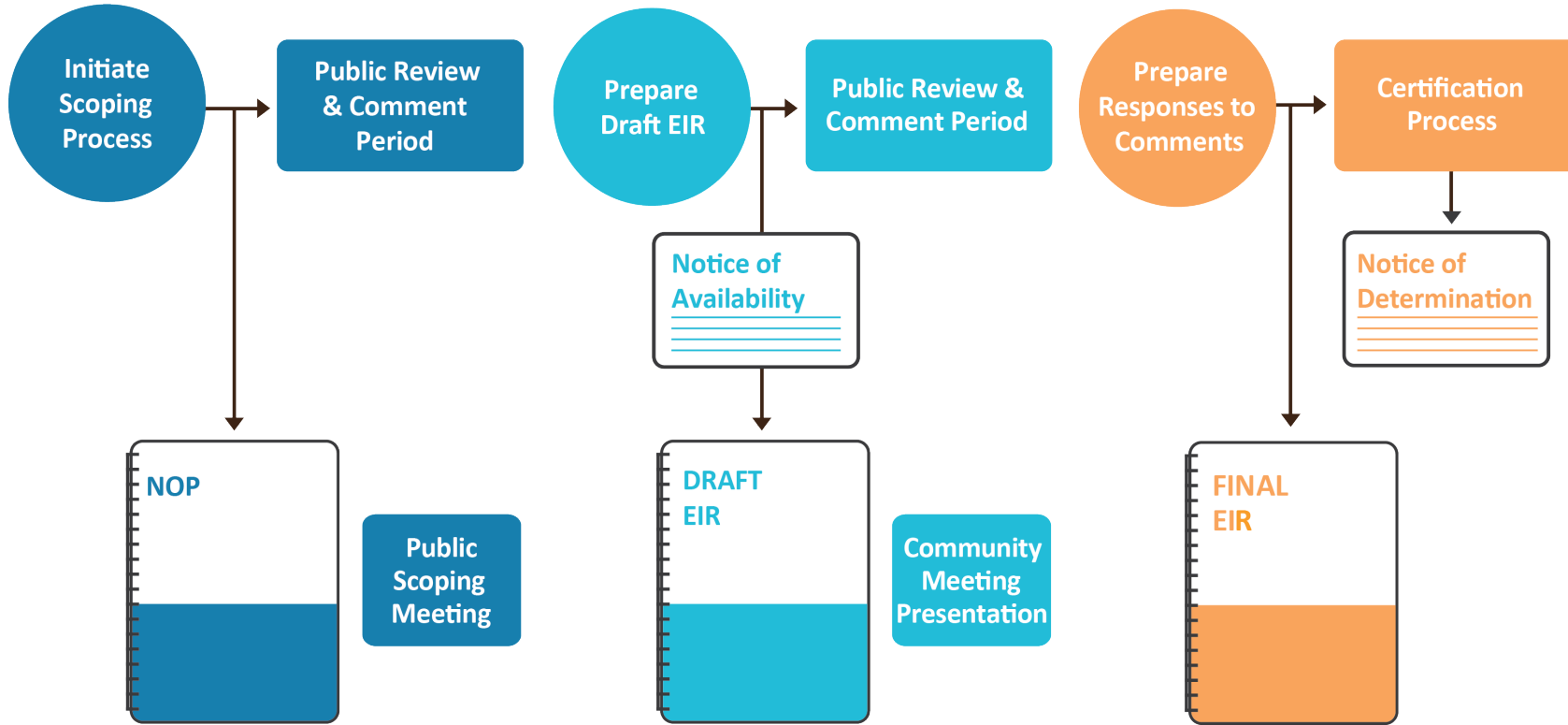
Ocean Outfall – Duckbill Valves



California Environmental Quality Act (CEQA)

- Present environmental impacts of proposed projects
- Identify ways to avoid or reduce environmental impacts
- Support the agency decision-making process
- Encourage public participation
- Enhance interagency coordination

CEQA Process



Project Timeline

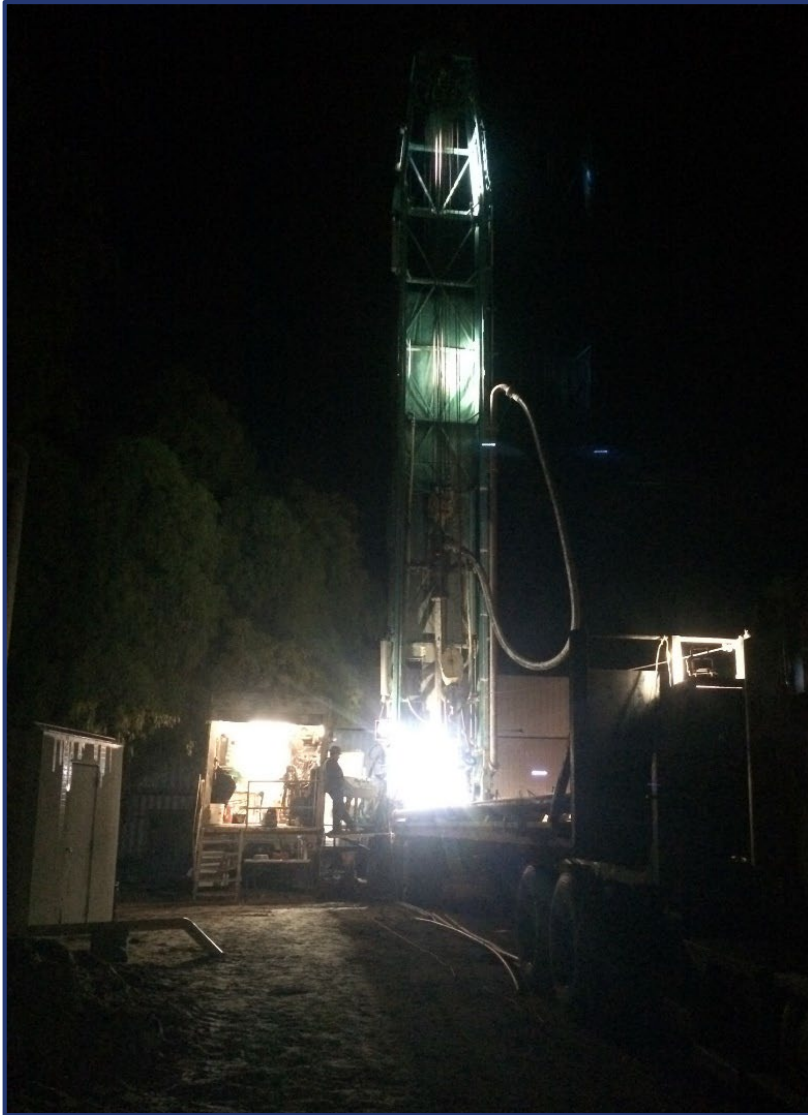


Initial Study and Noticing

- Initial Study = brief evaluation of potential environmental impacts
 - Available online: http://www.cvwd.net/water_info/projects.htm
- Determination = Environmental Impact Report (EIR)
 - If project may have a significant effect on the environment, an EIR shall be prepared (CEQA §15064)
- Notice of Preparation (NOP) = notice to interested agencies/entities
 - Requests input on what impacts should be evaluated in EIR
 - Sent to all agencies that will issue permits or approvals

Environmental Topics

- **Aesthetics**
- Agriculture/Forestry Resources
- **Air Quality**
- **Biological Resources**
- **Cultural Resources**
- **Geology and Soils**
- Greenhouse Gas Emissions
- **Hazards and Hazardous Materials**
- **Hydrology and Water Quality**
- Land Use and Planning
- Mineral Resources
- **Noise**
- Population and Housing
- Public Services
- Recreation
- **Transportation/Traffic**
- **Tribal Cultural Resources**
- Utilities and Service Systems



Potential Impacts: Construction

- Temporary source of noise or light from nighttime well construction
- Temporary noise and dust from AWPf construction
- Temporary increase in traffic delays or detours along pipeline alignments
- Potential disturbance of species or habitats along Franklin Creek



Potential Impacts: Operation

- Intermittent O&M trips to wells
- New operator and delivery trips to WWTP site
- Stormwater and flood management on WWTP site
- Water quality changes in marine zone surrounding ocean outfall

Next Steps for CEQA Process

- Provide input on environmental analysis – today!
 - Fill out a comment card and submit to a Team Member
- Draft EIR – anticipated June 2019
 - Provide written comments on environmental analysis
- Public Meeting on Draft EIR – anticipated June/July 2019
 - Provide oral comments on environmental analysis

Questions about the CAPP or CEQA?

- Visit subject matter experts at the different stations!

