



October 2010

Carpinteria Valley Water District

H₂KNOW

Groundwater Model Project Status Report

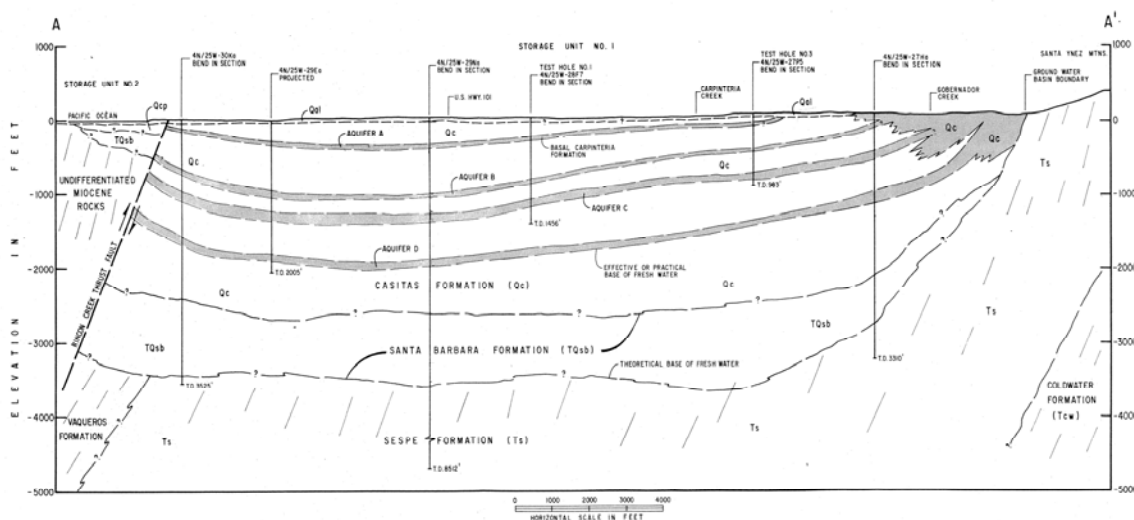
At the September 8th Board of Directors meeting, Robert Marks of Pueblo Water Resources presented the status and projected schedule of the District's Hydrogeologic Update and Groundwater Model Project. The project funded primarily with a grant of about \$248,000 from the California Department of Water Resources will give the District the capability to model and make informed decisions about the Carpinteria Groundwater Basin.

The Hydrogeologic update consisted of data compilation and review, information about the basin structure, characterization of aquifer hydraulic parameters, water level conditions, hydrologic budget and water balance.

The Groundwater Model, as a basin management tool, utilizes the latest subsurface and water balance information. It simulates the occurrence and movement of groundwater in the basin. In addition, the Model will allow District staff to assess potential impacts of increases in groundwater pumping, evaluate basin response to long-term drought and simulate alternative basin management scenarios.

The completion of this project, scheduled for May 2011, coincides with the District's completion of recent large groundwater related improvements such as Headquarters Well, El Carro Well and Foothill Storage Tank, further enabling more efficient use of groundwater and reducing overdependence on imported surface water.

Use of groundwater is a key to the District's meeting all current and future federal and state drinking water standards.



At left, is a cross section of the Carpinteria Groundwater Basin. The illustration is courtesy of Geotechnical Consultants.

Columbus Day: The District office **will be open** for business Monday, October 11th.

El Distrito es bilingue. Favor de llamar (805) 684-2816 con cualquier pregunta sobre su cuenta o el uso de agua, estamos aqui para asistirlos.

Water Meter Accessibility

The District's water meters are read on a monthly basis, **Monday through Friday, 7 a.m. to 7 p.m. and Saturday, 7 a.m. to 3 p.m.** Please keep your water meter accessible so that a quick and accurate read can be taken. Should an emergency arise it is important that staff can get to the meters for repairs. Below are ways to keep the meters clear for easy access.

Trees, shrubs, plantings

- Keep trees, shrubs and planting around the meter box trimmed.
- Please minimize plants in the area of the meter box to avoid damage to them from foot traffic.

Pets

- Please keep your pets, especially dogs confined in an area away from the meter **or** provide protected access to the meter to prevent interference from your pet.

Objects that cover or block you meter

- Make sure that no objects are placed so that they cover or block access to the meter box. Items that have been found blocking water meters include cars, trailers, garbage and recycling containers, construction equipment or supplies, landscape bark or gravel.

Locked Gates

- If your meter is located behind a gate that is normally kept locked, please contact us to arrange access.

Please call the District (805) 684-2816 if you have any questions or concerns.

Adjust Landscape Watering

The fall season is upon us and it is a good time to adjust automatic irrigation controllers to reflect the change in weather. The Landscape Watering Calculator and the Watering Index are two good resources found at www.sbwater.org to help you use water efficiently.

Landscape Watering Calculator

An on-line program in which you answer questions about your landscape and watering system in order to develop a weekly watering schedule. To use the program, visit www.sbwater.org/Water_Calc_Map.html

Weekly Watering Index

The Watering Index can be found on the home page of sbwater.org. It allows automatic irrigation controllers with a water budget adjustment feature to be easily modified. For more information, visit www.sbwater.org/WateringIndex.htm

Board of Directors Meetings

The Board of Directors may hold regular Board meetings on any Wednesday at 4 p.m. at the District Offices at 1301 Santa Ynez Avenue, except on the second Wednesday of the month. The second Wednesday meeting is held at 5:30 p.m. at Carpinteria City Hall, 5775 Carpinteria Avenue.

To find out about specific meeting dates, contact the District at 684-2816 x104 or go to www.cvwd.net.

Carpinteria Valley Water District Board of Directors

Frederick Lemere
President

June Van Wingerden
Vice President

James W. Drain
Robert R. Lieberknecht
Matthew T. Roberts

Staff

Charles Hamilton
General Manager

Alex Keuper

Engineering
Rob McDonald
District Engineer

Rhonda Gutierrez
Brian King
Mike Shaffer

Business
Norma Rosales
Business Manager

Esperanza Barbosa
Suzie Lara
Tootie Maier
Patty Rodriguez

Operations and
Maintenance
Omar Castro
O&M Manager

Lance Edmondson
Jon Macias
Ryan Quiroga
Danny Rada
Greg Stanford
Sarah Strassburg

Visit our website
www.cvwd.net
for new and updated
information.