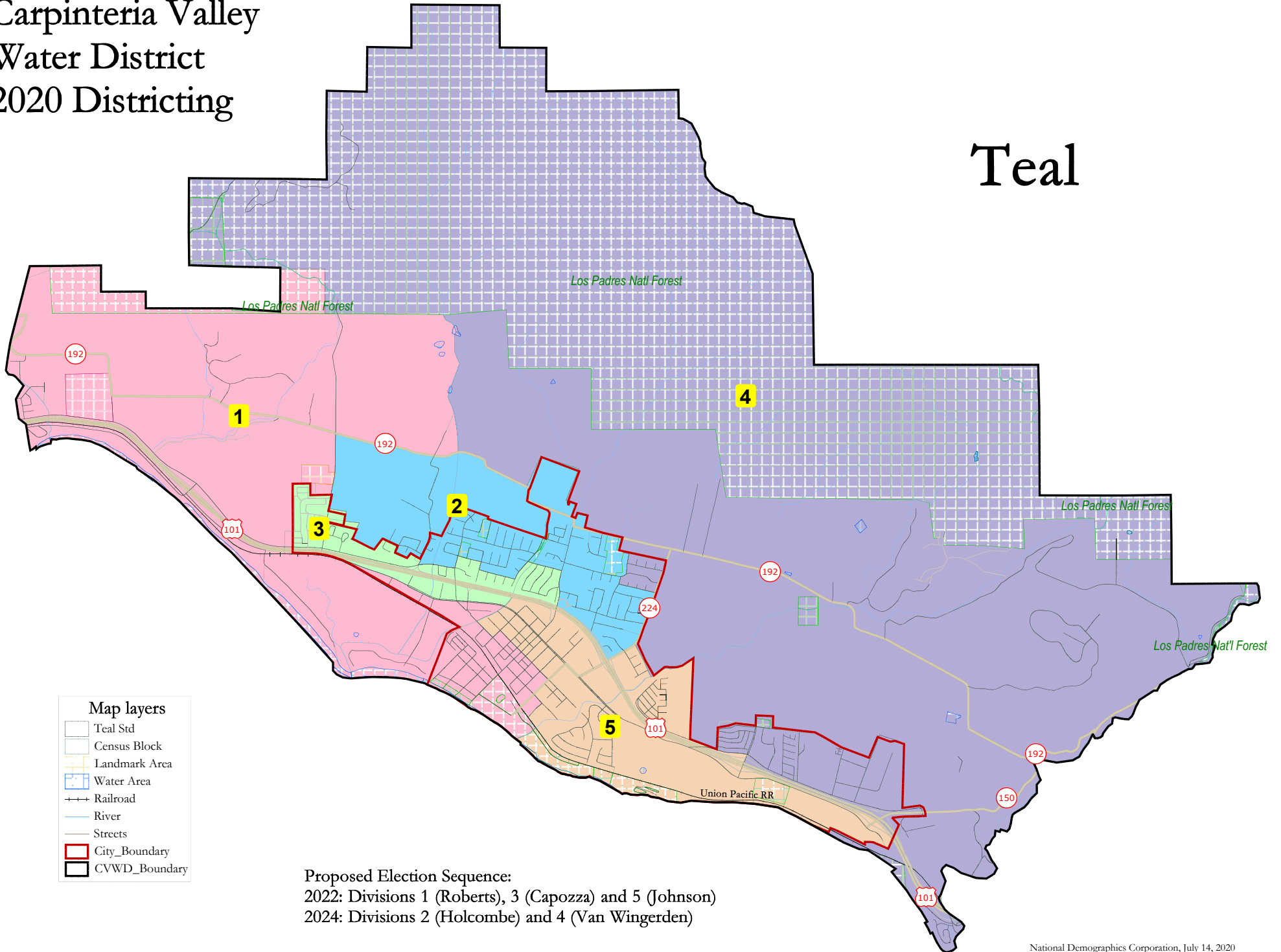


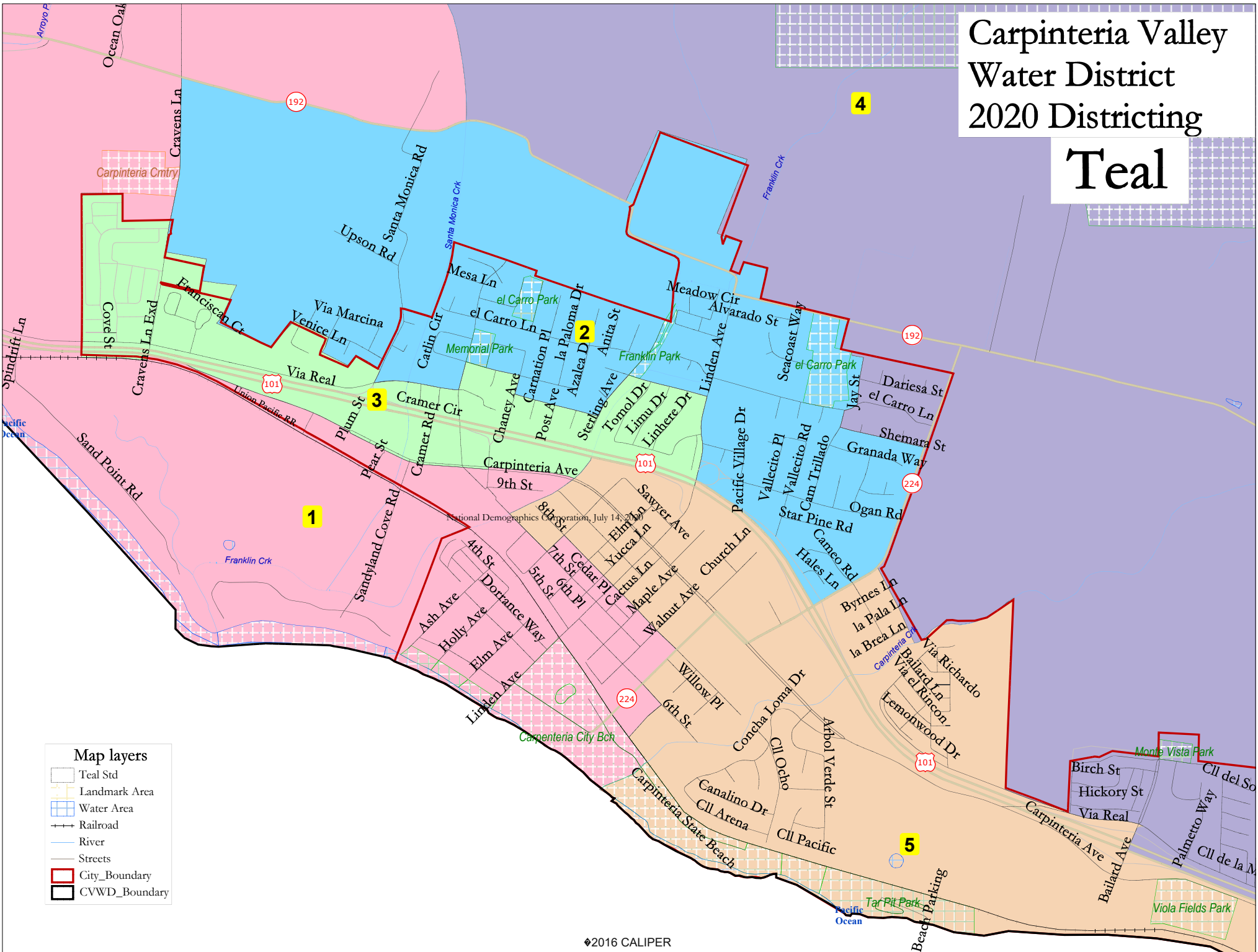
Carpinteria Valley Water District 2020 Districting

Teal



Proposed Election Sequence:
 2022: Divisions 1 (Roberts), 3 (Capozza) and 5 (Johnson)
 2024: Divisions 2 (Holcombe) and 4 (Van Wingerden)

Carpinteria Valley Water District 2020 Districting Teal



- Map layers**
- Teal Std
 - Landmark Area
 - Water Area
 - Railroad
 - River
 - Streets
 - City_Boundary
 - CVWD_Boundary

Carpinteria Valley Water District - Teal Draft Map

District		1	2	3	4	5	Total
	Total Pop	3,129	3,173	3,108	3,303	3,087	15,800
	Deviation from ideal	-31	13	-52	143	-73	216
	% Deviation	-0.98%	0.41%	-1.65%	4.53%	-2.31%	6.84%
Total Pop	% Hisp	37%	37%	59%	47%	44%	45%
	% NH White	59%	57%	36%	49%	52%	51%
	% NH Black	1%	1%	1%	1%	1%	1%
	% Asian-American	2%	4%	3%	3%	2%	3%
	Total	2,095	2,506	1,905	2,431	2,130	11,067
Citizen Voting Age Pop	% Hisp	20%	23%	52%	30%	24%	29%
	% NH White	75%	71%	45%	62%	72%	66%
	% NH Black	0%	0%	0%	2%	0%	1%
	% Asian/Pac.Isl.	5%	5%	3%	5%	1%	4%
	Total	1,647	2,126	1,609	1,776	1,801	8,959
Voter Registration (Nov 2018)	% Latino est.	25%	31%	35%	23%	31%	29%
	% Spanish-Surnamed	23%	28%	32%	21%	28%	26%
	% Asian-Surnamed	2%	2%	1%	2%	1%	2%
	% Filipino-Surnamed	0%	1%	1%	0%	1%	1%
	% NH White est.	72%	66%	61%	73%	68%	68%
	% NH Black	0%	0%	0%	2%	0%	1%
	Total	1,242	1,635	1,214	1,383	1,378	6,852
Voter Turnout (Nov 2018)	% Latino est.	21%	26%	30%	19%	25%	24%
	% Spanish-Surnamed	19%	23%	27%	17%	23%	22%
	% Asian-Surnamed	1%	2%	1%	2%	1%	2%
	% Filipino-Surnamed	0%	1%	1%	0%	0%	1%
	% NH White est.	76%	71%	66%	77%	73%	73%
	% NH Black	0%	0%	0%	2%	0%	1%
	Total	1,447	1,806	1,387	1,893	1,246	7,778
Voter Turnout (Nov 2016)	% Latino est.	23%	28%	33%	23%	22%	26%
	% Spanish-Surnamed	21%	25%	29%	21%	20%	23%
	% Asian-Surnamed	1%	2%	1%	2%	1%	2%
	% Filipino-Surnamed	0%	1%	1%	0%	1%	1%
	% NH White est.	74%	68%	63%	73%	76%	71%
	% NH Black est.	0%	0%	0%	2%	0%	1%
	Total	2,757	3,451	3,072	3,815	3,022	16,117
ACS Pop. Est.	Total	2,757	3,451	3,072	3,815	3,022	16,117
Age	age0-19	17%	24%	21%	22%	20%	21%
	age20-60	51%	51%	51%	51%	55%	52%
	age60plus	33%	24%	29%	27%	25%	27%
Immigration	immigrants	21%	21%	21%	30%	24%	24%
	naturalized	50%	37%	44%	39%	35%	41%
Language spoken at home	english	70%	64%	67%	52%	62%	62%
	spanish	24%	34%	29%	45%	34%	34%
	asian-lang	3%	1%	2%	1%	3%	2%
	other lang	3%	1%	2%	2%	2%	2%
Language Fluency	Speaks Eng. "Less than Very Well"	11%	11%	11%	23%	16%	15%
Education (among those age 25+)	hs-grad	44%	52%	48%	44%	48%	47%
	bachelor	28%	22%	25%	21%	20%	23%
	graduatedegree	14%	13%	14%	12%	13%	13%
Child in Household	child-under18	19%	29%	24%	27%	24%	24%
Pct of Pop. Age 16+	employed	62%	61%	61%	60%	66%	62%
Household Income	income 0-25k	15%	10%	11%	12%	16%	13%
	income 25-50k	19%	14%	16%	19%	21%	18%
	income 50-75k	19%	18%	18%	18%	21%	19%
	income 75-200k	27%	47%	39%	39%	29%	36%
	income 200k-plus	19%	11%	15%	13%	13%	15%
Housing Stats	single family	62%	86%	78%	60%	49%	65%
	multi-family	38%	14%	22%	40%	51%	35%
	rented	55%	35%	40%	37%	60%	46%
	owned	45%	65%	60%	63%	40%	54%

Total population data from the 2010 Decennial Census. Surname-based Voter Registration and Turnout data from the California Statewide Database. Latino voter registration and turnout data are Spanish-surname counts adjusted using Census Population Department undercount estimates. NH White and NH Black registration and turnout counts estimated by NDC. Citizen Voting Age Pop., Age, Immigration, and other demographics from the 2014-2018 American Community Survey and Special Tabulation 5-year data.