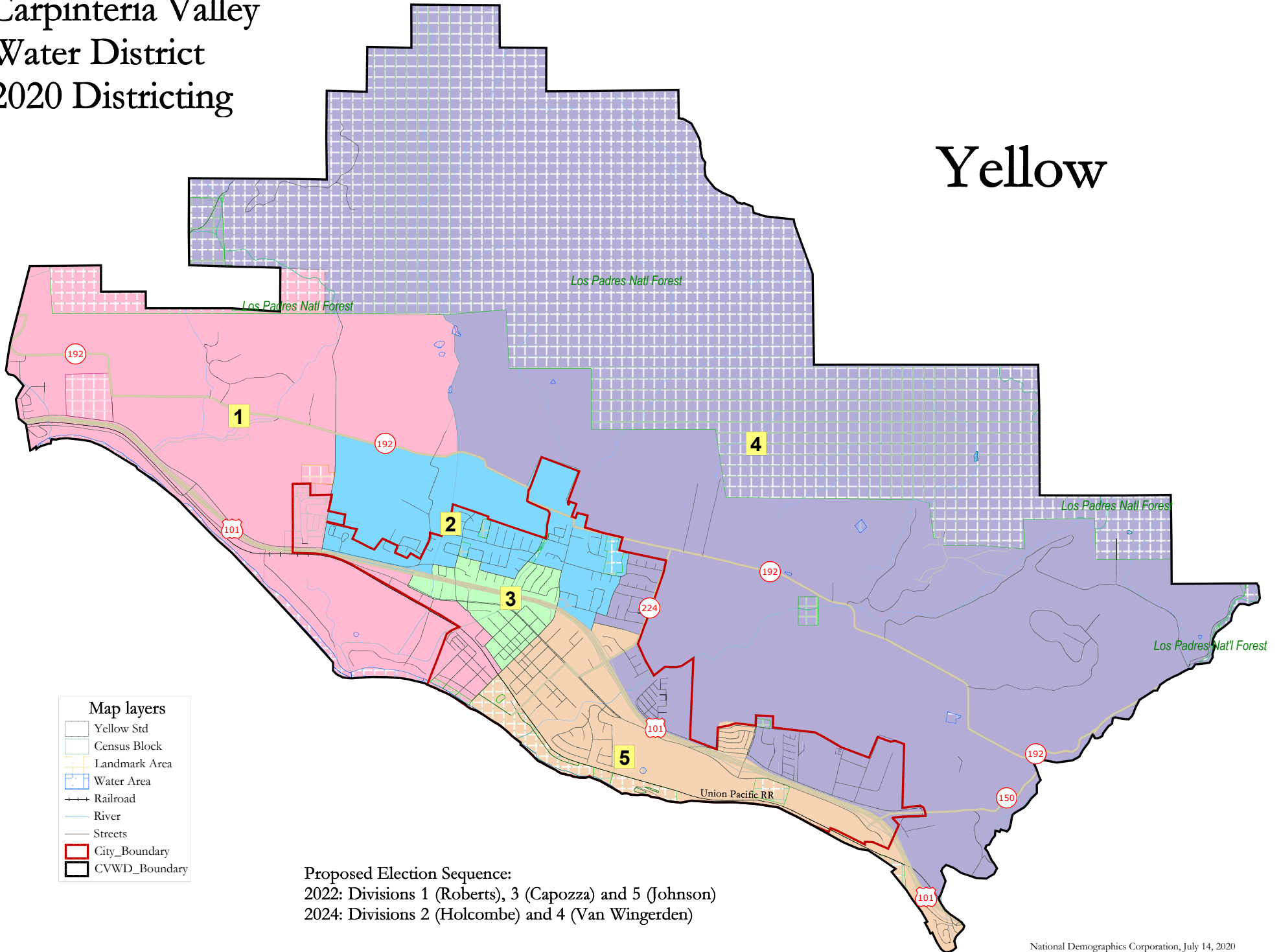


# Carpinteria Valley Water District 2020 Districting

# Yellow

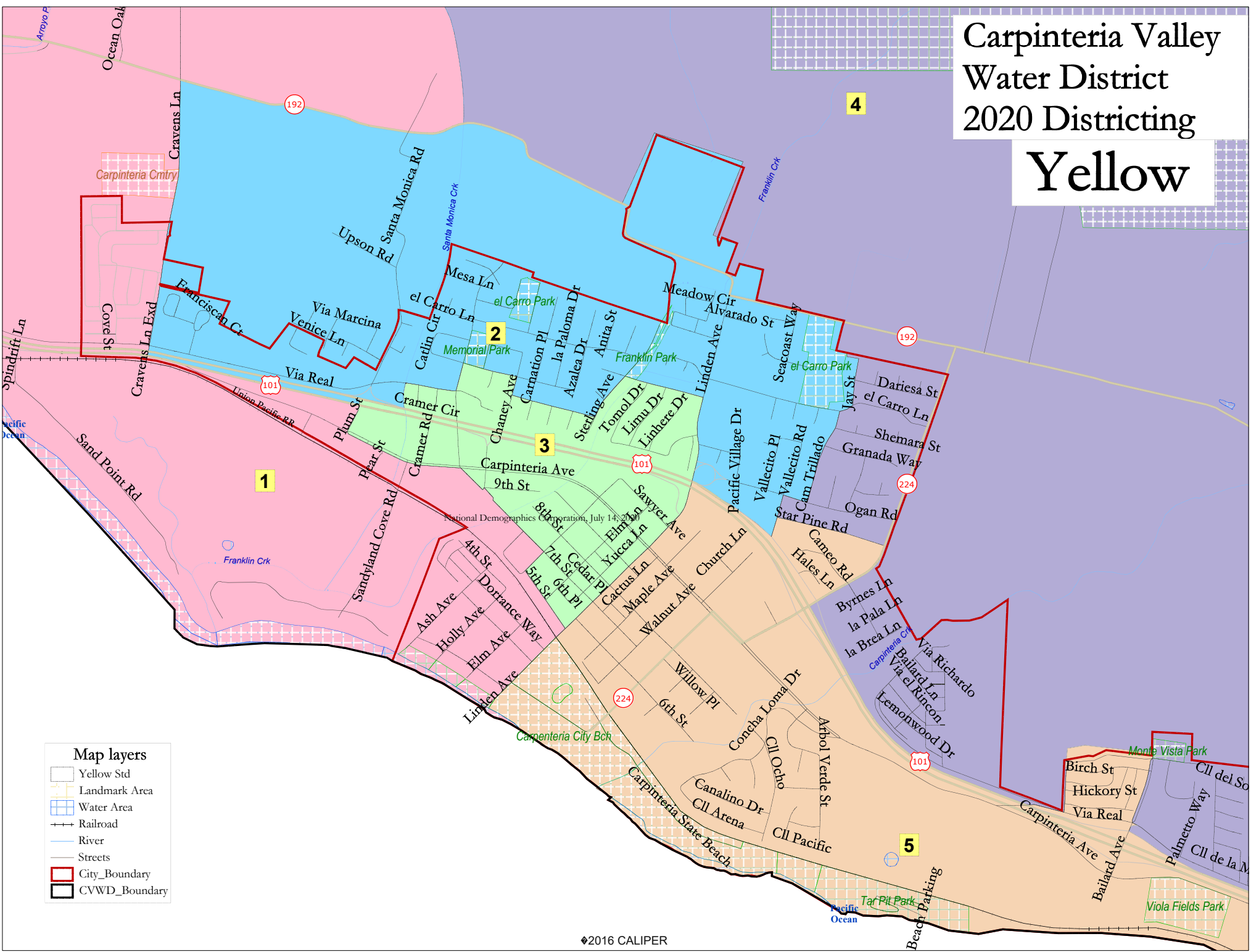


**Map layers**

	Yellow Std
	Census Block
	Landmark Area
	Water Area
	Railroad
	River
	Streets
	City_Boundary
	CVWD_Boundary

**Proposed Election Sequence:**  
 2022: Divisions 1 (Roberts), 3 (Capozza) and 5 (Johnson)  
 2024: Divisions 2 (Holcombe) and 4 (Van Wingerden)

# Carpinteria Valley Water District 2020 Districting Yellow



- Map layers**
- Yellow Std
  - Landmark Area
  - Water Area
  - Railroad
  - River
  - Streets
  - City\_Boundary
  - CVWD\_Boundary

**Carpinteria Valley Water District - Yellow Draft Map**

District		1	2	3	4	5	Total
	Total Pop	3,110	3,179	3,173	3,105	3,233	15,800
	Deviation from ideal	-50	19	13	-55	73	128
	% Deviation	-1.58%	0.60%	0.41%	-1.74%	2.31%	4.05%
Total Pop	% Hisp	31%	38%	72%	34%	48%	45%
	% NH White	65%	57%	23%	60%	48%	51%
	% NH Black	1%	1%	1%	1%	1%	1%
	% Asian-American	2%	3%	2%	4%	2%	3%
	Total	2,228	2,439	1,651	2,505	2,244	11,067
Citizen Voting Age Pop	% Hisp	19%	29%	54%	19%	32%	29%
	% NH White	76%	66%	45%	72%	63%	66%
	% NH Black	0%	0%	0%	2%	1%	1%
	% Asian/Pac.Isl.	5%	4%	1%	6%	2%	4%
	Total	1,798	2,057	1,301	1,834	1,969	8,959
Voter Registration (Nov 2018)	% Latino est.	25%	32%	38%	23%	30%	29%
	% Spanish-Surnamed	23%	28%	35%	21%	27%	26%
	% Asian-Surnamed	2%	2%	1%	3%	1%	2%
	% Filipino-Surnamed	1%	1%	1%	0%	1%	1%
	% NH White est.	72%	66%	57%	74%	68%	68%
	% NH Black	0%	0%	0%	1%	1%	1%
	Total	1,373	1,579	947	1,429	1,523	6,852
Voter Turnout (Nov 2018)	% Latino est.	21%	27%	33%	19%	24%	24%
	% Spanish-Surnamed	19%	24%	30%	17%	22%	22%
	% Asian-Surnamed	1%	2%	1%	3%	1%	2%
	% Filipino-Surnamed	1%	1%	1%	0%	0%	1%
	% NH White est.	76%	71%	62%	78%	73%	73%
	% NH Black	0%	0%	0%	1%	1%	1%
	Total	1,555	1,812	1,097	1,946	1,368	7,778
Voter Turnout (Nov 2016)	% Latino est.	24%	28%	35%	23%	21%	26%
	% Spanish-Surnamed	22%	25%	32%	20%	19%	23%
	% Asian-Surnamed	1%	2%	1%	2%	2%	2%
	% Filipino-Surnamed	0%	1%	1%	0%	0%	1%
	% NH White est.	73%	69%	60%	74%	75%	71%
	% NH Black est.	0%	0%	0%	1%	1%	1%
	Total	2,733	3,457	3,018	3,466	3,443	16,117
ACS Pop. Est.	Total	2,733	3,457	3,018	3,466	3,443	16,117
Age	age0-19	15%	24%	21%	22%	21%	21%
	age20-60	48%	51%	54%	50%	54%	52%
	age60plus	36%	24%	26%	28%	24%	27%
Immigration	immigrants	22%	21%	20%	28%	27%	24%
	naturalized	57%	37%	37%	41%	35%	41%
Language spoken at home	english	71%	64%	67%	55%	56%	62%
	spanish	23%	34%	28%	41%	40%	34%
	asian-lang	2%	1%	3%	1%	3%	2%
	other lang	4%	1%	2%	2%	1%	2%
Language Fluency	Speaks Eng. "Less than Very Well"	11%	11%	11%	20%	20%	15%
Education (among those age 25+)	hs-grad	41%	52%	50%	45%	48%	47%
	bachelor	32%	22%	22%	22%	19%	23%
	graduatedegree	15%	13%	14%	13%	12%	13%
Child in Household	child-under18	18%	29%	24%	27%	25%	24%
Pct of Pop. Age 16+	employed	58%	61%	65%	59%	64%	62%
Household Income	income 0-25k	13%	10%	15%	11%	15%	13%
	income 25-50k	19%	14%	19%	18%	21%	18%
	income 50-75k	18%	18%	21%	18%	20%	19%
	income 75-200k	28%	47%	32%	40%	32%	36%
	income 200k-plus	21%	11%	14%	13%	12%	15%
Housing Stats	single family	67%	86%	59%	66%	49%	65%
	multi-family	33%	14%	41%	34%	51%	35%
	rented	49%	35%	57%	36%	54%	46%
	owned	51%	65%	43%	64%	46%	54%

Total population data from the 2010 Decennial Census. Surname-based Voter Registration and Turnout data from the California Statewide Database. Latino voter registration and turnout data are Spanish-surname counts adjusted using Census Population Department undercount estimates. NH White and NH Black registration and turnout counts estimated by NDC. Citizen Voting Age Pop., Age, Immigration, and other demographics from the 2014-2018 American Community Survey and Special Tabulation 5-year data.